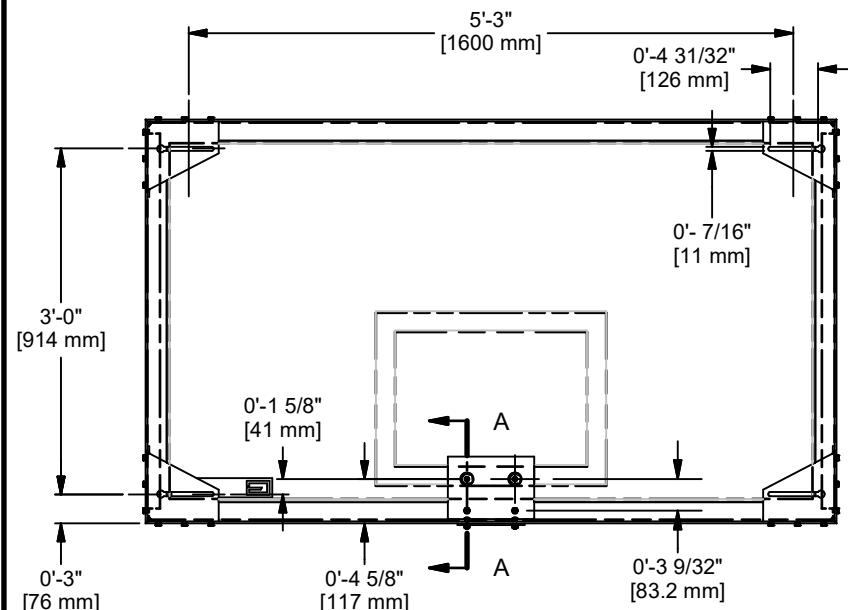
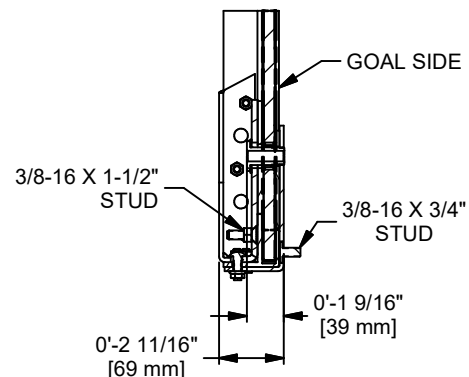
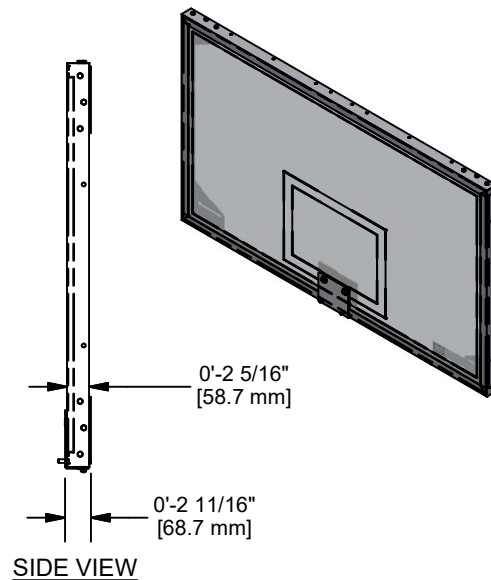


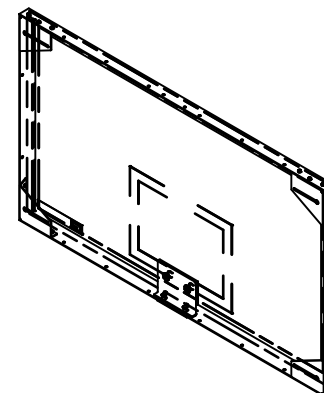
FRONT VIEW



REAR VIEW



SECTION A-A



MATERIAL IS 1/2" THICK TEMPERED GLASS WITH ALUMINUM FRAME

FINISH IS GRAY POWDER COAT ON BRACKETS AND PLATES..

F	ERD	08-04-23
E	MJP	03/27/23
D	MJP	07/02/21
C	JJC	11/15/17
B	RWP	06/06/08
A	JJC	12/01/03
REV	BY	DATE

G **PERFORMANCE**
GARED SPORTS SYSTEMS

Gared Performance Sports Systems
9200 East 146th Street, Suite A
Noblesville, IN 46060

THIS DOCUMENT CONTAINS TRADE SECRET AND OTHER MATERIALS WHICH ARE PROTECTED BY CONFIDENTIALITY NOTICE AND AGREEMENT AND BY COPYRIGHT. ANY USE OR COPYING OF THIS DOCUMENT EXCEPT AS AUTHORIZED BY GARED PERFORMANCE SPORTS SYSTEMS IS STRICTLY PROHIBITED.

ALUM FRAMED RECT GL BB

DRAWN CONNERLEY	DATE 5/2/2003	DATE ISSUED
APPROVED	DATE	
SIZE A	SCALE	SHT. NO. 1 OF 2
		PART NO. AFRG42
		REV F



MODEL AFRG42

ALUMINUM FRAME 72" X 42" RECTANGULAR GLASS BACKBOARD

The AFRG42 backboard shall be fabricated with an aluminum frame constructed of 0.200" thick extruded "F" channel with steel corner brackets. All steel components shall be powder coated with a durable gray finish. Aluminum-capped frame will not be acceptable. Manufacturer of backboard shall have over ten years of experience. Backboard shall meet NCAA and high school requirements.

Glass shall be ½" in thickness and fully tempered with white border and target lines permanently fused onto the surface. Vinyl shock absorbing material insulates the glass from the frame. Goal mounting holes shall be on standard 5" horizontal and 4" vertical centers. Acrylic cushioning pad shall be used between steel mounting plate and glass to protect against possible breakage.

ACCESSORIES

GOALS

See Goal-Board Matrix specification sheet for goal compatibility.